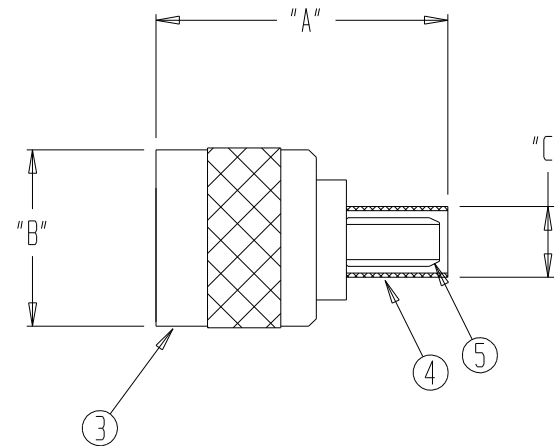


THIS DOCUMENT AND THE INFORMATION IT CONTAINS IS THE PROPERTY OF EMTEQ INC. AND MAY NOT BE USED IN ANY WAY WITHOUT THE EXPRESS WRITTEN CONSENT OF EMTEQ INC.

REV	REVISION	DATE	EN #	INTL
F	CLARIFY CALLOUT OF GOLD CRIMP TUBE	12/14/2007	7849	VML
G	DELETE P/N 29-174-2 ADD 09-168-3 TO TFLX225-100	10/31/2008	9070	LLP
H	CHANGE P/N'S, ITEM 6 , HEATSHRINK	10/28/2009	10252	VML

DIMENSIONAL INFORMATION

PART NO.	"A"	"B"	"C"	ASS'Y INSTRUCTIONS
CMS130-1	1.37 (34.8)	0.75 (19.0)	0.22 (5.6)	ES-105-28
CMS165-1	1.38 (35.1)	0.75 (19.0)	0.25 (6.4)	ES-105-1
CMS195-1	1.38 (35.1)	0.75 (19.0)	0.25 (6.4)	ES-105-1
CMS205-1	1.38 (35.1)	0.75 (19.0)	0.30 (7.6)	ES-105-1
CMS225-1	1.50 (38.1)	0.75 (19.0)	0.30 (7.6)	ES-105-1
CMS240-1	1.38 (35.1)	0.75 (19.0)	0.30 (7.6)	ES-105-1
CMS295-1	1.50 (38.1)	0.75 (19.0)	0.39 (9.9)	ES-105-6
CMS340-1	1.50 (38.1)	0.75 (19.0)	0.39 (9.9)	ES-105-6
CMS500-1	1.62 (41.1)	0.75 (19.0)	0.56 (14.2)	ES-105-6



SPECIFICATIONS:

- ELECTRICAL
 IMPEDANCE: 50 OHMS
 FREQUENCY RANGE: 0 TO 4 GHZ
 VOLTAGE RATING: 1,000 V RMS
 DIELECTRIC WITHSTANDING VOLTAGE: 1,500 V RMS
 INSULATION RESISTANCE: 5,000 MEGOHMS MIN

- MECHANICAL
 TERMINATION STYLE: INNER CONTACT - SOLDER
 OUTER CONTACT - CRIMP
 TEMPERATURE RANGE: -65° C TO + 165° C
 FINISHES:
 BODY FINISH: PROPRIETARY NICKEL
 CONTACT FINISH: GOLD PLATED PER MIL-G-45204
 DESIGNED IN ACCORDANCE WITH MIL-C-39012 STANDARDS.

CMS#	500-1	340-1	295-1	240-1	225-1	205-1	195-1	165-1	130-1	PART NUMBER	DESCRIPTION	ITEM
										29-174-2	DURABLE HEATSHRINK	6
										ATUM 1/2" BLK		
	1									29-174-4	TUBE, INNER	5
									1	29-109-09		
										29-137-2	CRIMP TUBE	4
										29-141-2		
										29-140-2		
										29-140-4		
										29-138-2		
										29-100-74/29-100-4		
										29-100-92		
	1									29-100-68	BODY	3
										29-100-63		
										29-100-12		
	1									09-170-1		
		1								09-168-1		
										09-169-1		
										09-168-2		
										09-168-3	CONTACT	2
	1	1								06-425-10		
										06-425-12		
										06-425-20		
										06-425-14		
	1									06-806-2		
	1									15-345-3		
										15-469-17		
										15-469-5		
	1	1								15-469-3		
										15-469-4		
										15-469-10		
										15-469-10		

CMS#	500-1	340-1	295-1	240-1	225-1	205-1	195-1	165-1	130-1	PART NUMBER	DESCRIPTION	ITEM
PARTS LIST												

MATERIAL	SCALE -	SIZE B	DATE 8/20/99	5349 S. EMMER DRIVE NEW BERLIN, WI 53151 (888) 679-6170
	FINISH	TOLERANCES UNLESS NOTED .XX = ± .03 .XXX = ± .010 ANGLES ± 1°		
CAD GENERATED AND MAINTAINED DRAWING -- DO NOT SCALE			EAGE CODE DWG #	PLUG, TYPE C, STRAIGHT CONNECTOR CMSXXX-1
NOTICE -- ALL CHANGES TO THIS DOCUMENT ARE CONTROLLED BY EMTEQ INC / UNLESS OTHERWISE STATED, ALL REPRODUCTIONS OF THIS DOCUMENT ARE NOT CONTROLLED BY EMTEQ INC				SHT 1 OF 1 FILE: CMSXXX-1.prt