



C46031-4/-5/-6 CABIN RECIRCULATION AIR FILTER

INCREASE AIRFLOW AND ECS LIFE SPAN

Added filtration to reduce blockage of condenser mixer

The Collins C46031-4/-5/-6 cabin recirculation air filter helps purify cabin recirculation air before it reaches the condenser mixer.

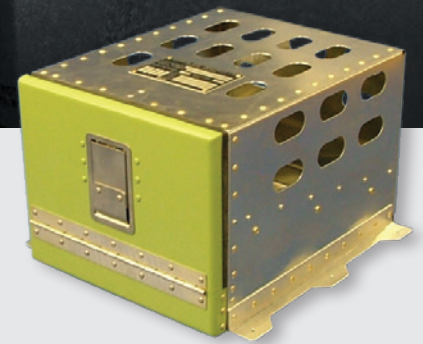
Currently, air is drawn from the cabin where it is mixed with fresh air and passed through the heat exchanger before being distributed back to the cabin. Because the cabin air is laden with dust, this causes blockage of the condenser mixer, leading to reduced or no recirculation airflow and reduced life of ECS parts.

To remedy this situation, our filter is designed to insert into the recirculation duct, upstream of the recirculation blower fan. The filter is mounted inside an aluminum sheet metal box that is attached

to the floor beneath the aft right-hand seat. The filter element, which is designed to trap dust before it reaches the heat exchanger, is easy to remove from the box for periodic cleaning or replacement.

KIT OPTIONS

- C46031-4 installation kit Dash-8 (-100/-200) post-1990
- C46031-5 installation kit Dash-8 (-300; 50 passengers) post-1990
- C46031-6 installation kit Dash-8 (-300; 52/56 passengers) post-1990



KEY FEATURES AND BENEFITS

- Reduces potential blockage of the condenser mixer
- Promotes peak performance of the ECS
- Reduces maintenance costs associated with ECS cleaning

SPECIFICATIONS

Applicability	DHC-8 series 100 and 300, post-1990; Hunting and C&D interiors; and 200 series, all interiors*
Labor	Approximately six hours, including access and close-out if right-hand aft cabin floor panel is pre-modified
Kit contents	<ul style="list-style-type: none"> • Filter box assembly with filter • Installation brackets and hardware • Maintenance manual supplement • Illustrated parts catalogue supplement • Ducting
Weight	<ul style="list-style-type: none"> • 6.5 lbs. – 4 kit • 7.5 lbs. – 5 kit • 8.0 lbs. – 6 kit (20 lbs. of ducting removed prior to installation)
Certification	<ul style="list-style-type: none"> • Transport Canada: SA01-65 • EASA: EASA.IM.A. S.02429 • FAA: ST01375NY • Japan: STC-47-HQT • Angola: Letter of Acceptance
Delivery	F.O.B Winnipeg, MB, Canada

*Applicable to 300 series with 50-seat cabin and left-hand aft seats at between station 550.5 and 572.0 or between station 572.0 and 600.0. Applicable to 300 series with 52- or 56-seat cabin and left-hand aft seats at between station 572.0 and 600.0.

Specifications subject to change without notice.



Collins Aerospace

+1.204.783.5402

sales.canada@collins.com

collinsaerospace.com